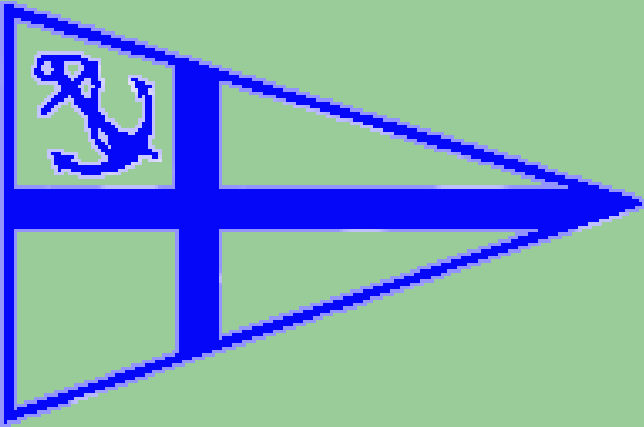


Jamestown Yacht Club



2026 Skippers Meeting
27 April 2026

Cheryl Rienzo
JYC Fleet Captain/RC Chairperson
401.782.7271
fleetcaptain@jyc.org

Agenda

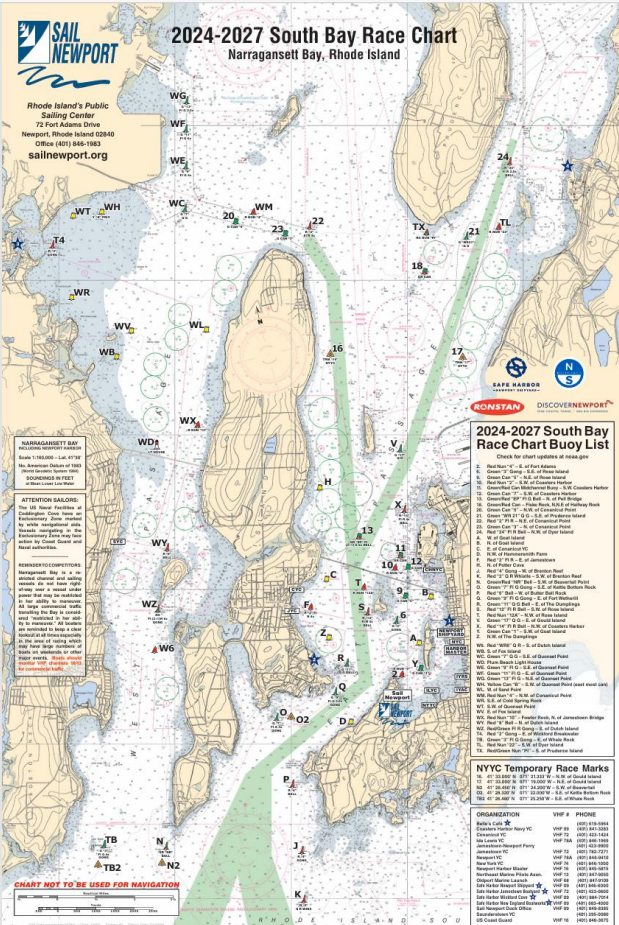
- JYC Racing Schedule 2026
- JYC Race Book updates 2026
- Racing Reminders & Safety
- JYC Racing Socials
- NBYA Initiatives/Competitions
- PHRF-NB Reminders

2026 Race Schedule as of April 2026

- Skippers Mtg/Regist open **Mon 4/27**
- Spring series **Tues 5/12-6/9**
 - Spring Regist closed*/Summer open **Tues 5/26**
- Spring Race gathering **Tues 6/9 @ CYC**
- Summer & Crew Rotation **Tues 6/16-8/25**
 - Summer/All Ser Regist closed*/Fall open **Tues 8/4**
- Fall Series **Tues 9/1, Sun 9/13-10/4**
 - Fall Regist closed* **Sun 9/20**
- Install & Awards Banquet **Sat 11/21 @ Newport Harbor Hotel & Marina**

* Registration closure dates dependent on # of race qualifiers so are subject to change, e.g., if weather cancels a race

JYC Race Area & Courses



2024-2027 SOUTH BAY RACE CHART COURSES

Brand Marks in the order listed. Enter each Mark on the side indicated by the letter following the Mark (p = port, s = starboard). If the Race Committee displays a number in parentheses after the Course Designation, it indicates the number of legs in the sub-Course. Course XX, when entered, is the Course Designation, must appear. Use Course with (F) after the last Mark. South of the Mark. Other Courses have one more leg to the finish.

STARTS SOUTHEAST OF ROSE ISLAND - NEWPORT YACHT CLUB RACE COURSES

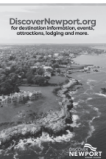
Course	Mark	Distance (MI)	Course	Mark	Distance (MI)	Course	Mark	Distance (MI)	Course	Mark	Distance (MI)
1	WM	1.0	16	WM	1.0	31	WM	1.0	46	WM	1.0
2	WM	1.5	17	WM	1.5	32	WM	1.5	47	WM	1.5
3	WM	2.0	18	WM	2.0	33	WM	2.0	48	WM	2.0
4	WM	2.5	19	WM	2.5	34	WM	2.5	49	WM	2.5
5	WM	3.0	20	WM	3.0	35	WM	3.0	50	WM	3.0
6	WM	3.5	21	WM	3.5	36	WM	3.5	51	WM	3.5
7	WM	4.0	22	WM	4.0	37	WM	4.0	52	WM	4.0
8	WM	4.5	23	WM	4.5	38	WM	4.5	53	WM	4.5
9	WM	5.0	24	WM	5.0	39	WM	5.0	54	WM	5.0
10	WM	5.5	25	WM	5.5	40	WM	5.5	55	WM	5.5
11	WM	6.0	26	WM	6.0	41	WM	6.0	56	WM	6.0
12	WM	6.5	27	WM	6.5	42	WM	6.5	57	WM	6.5
13	WM	7.0	28	WM	7.0	43	WM	7.0	58	WM	7.0
14	WM	7.5	29	WM	7.5	44	WM	7.5	59	WM	7.5
15	WM	8.0	30	WM	8.0	45	WM	8.0	60	WM	8.0

STARTS WEST OF COASTERS HARBOR ISLAND

Course	Mark	Distance (MI)	Course	Mark	Distance (MI)	Course	Mark	Distance (MI)	Course	Mark	Distance (MI)
1	WM	1.0	16	WM	1.0	31	WM	1.0	46	WM	1.0
2	WM	1.5	17	WM	1.5	32	WM	1.5	47	WM	1.5
3	WM	2.0	18	WM	2.0	33	WM	2.0	48	WM	2.0
4	WM	2.5	19	WM	2.5	34	WM	2.5	49	WM	2.5
5	WM	3.0	20	WM	3.0	35	WM	3.0	50	WM	3.0
6	WM	3.5	21	WM	3.5	36	WM	3.5	51	WM	3.5
7	WM	4.0	22	WM	4.0	37	WM	4.0	52	WM	4.0
8	WM	4.5	23	WM	4.5	38	WM	4.5	53	WM	4.5
9	WM	5.0	24	WM	5.0	39	WM	5.0	54	WM	5.0
10	WM	5.5	25	WM	5.5	40	WM	5.5	55	WM	5.5
11	WM	6.0	26	WM	6.0	41	WM	6.0	56	WM	6.0
12	WM	6.5	27	WM	6.5	42	WM	6.5	57	WM	6.5
13	WM	7.0	28	WM	7.0	43	WM	7.0	58	WM	7.0
14	WM	7.5	29	WM	7.5	44	WM	7.5	59	WM	7.5
15	WM	8.0	30	WM	8.0	45	WM	8.0	60	WM	8.0

STARTS AT SPECIAL RACE MARK C - JAMESTOWN YACHT CLUB RACE COURSES

Course	Mark	Distance (MI)	Course	Mark	Distance (MI)	Course	Mark	Distance (MI)	Course	Mark	Distance (MI)
1	WM	1.0	16	WM	1.0	31	WM	1.0	46	WM	1.0
2	WM	1.5	17	WM	1.5	32	WM	1.5	47	WM	1.5
3	WM	2.0	18	WM	2.0	33	WM	2.0	48	WM	2.0
4	WM	2.5	19	WM	2.5	34	WM	2.5	49	WM	2.5
5	WM	3.0	20	WM	3.0	35	WM	3.0	50	WM	3.0
6	WM	3.5	21	WM	3.5	36	WM	3.5	51	WM	3.5
7	WM	4.0	22	WM	4.0	37	WM	4.0	52	WM	4.0
8	WM	4.5	23	WM	4.5	38	WM	4.5	53	WM	4.5
9	WM	5.0	24	WM	5.0	39	WM	5.0	54	WM	5.0
10	WM	5.5	25	WM	5.5	40	WM	5.5	55	WM	5.5
11	WM	6.0	26	WM	6.0	41	WM	6.0	56	WM	6.0
12	WM	6.5	27	WM	6.5	42	WM	6.5	57	WM	6.5
13	WM	7.0	28	WM	7.0	43	WM	7.0	58	WM	7.0
14	WM	7.5	29	WM	7.5	44	WM	7.5	59	WM	7.5
15	WM	8.0	30	WM	8.0	45	WM	8.0	60	WM	8.0



Online registry available

Belle's

Member of Coastal Security
7300 N. Ocean Blvd.

AT SAIL NEWPORT YACHT CLUB
MEMBERSHIP CONTACT INFORMATION

IN HONOR OF
**Dr. A.R.G.
Robin Wallace**

For winds and following seas...
1936-2021

2026 Race Book – No substantive changes from 2025 (1 of 2)

- Race Circular once again SEPARATE Notice of Race and Sailing Instructions documents per US Sailing NOR & SI templates
 - NOR includes the paper forms for Crew Rotation, Registration & JYC membership
 - SI includes Series specific addenda, JYC Course listing, JYC calendar, and Accident/Injury Protocol
- NOR Abbreviations added
- NOR Para 1.4 updated to reflect full change language of current *RRS* rules modified by this NOR
- NOR Para 5 Fees has been updated

2026 Race Book – No substantive changes from 2025 (2 of 2)

- NOR Para 7 updated schedule of racing for 2026
- NOR Para 8 updated to reflect full requirements of *RRS 78*
- NOR Para 12 updated to combine Scoring and Qualification requirements
- SI Abbreviations added
- SI Para 14.5 defines a time limit for Requests for Redress
- Series/Crew Rotation Addenda Para 5 Time Limit language updated – remains 30 minutes from 1st finisher of a class for remaining competitors to finish
- SI JYC Calendar updated for 2026
- SI JYC New Member Application provided for those interested

2026 Race Book Reminders

- Requirement to maintain watch on VHF channel 72 during race and check out with RC if withdrawing from the race for any reason
 - Recommend watch on VHF channel 13 as well
- Note Narragansett Bay is a restricted waterway for commercial traffic and therefore falls under NOR para 1/subpara 4.f restrictions

Other On the Water Notes

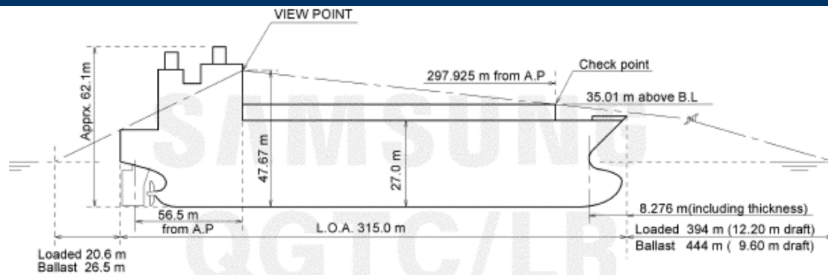
- RC will have an AED on board if needed in an emergency
- RC will retest robotic starting pin to replace the orange tetrahedron mark



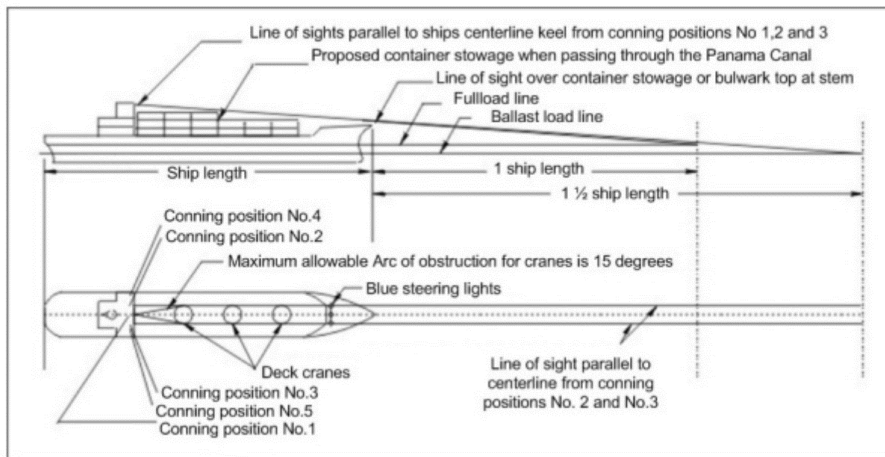
Season Reminders

- As typical, our Class Splits will depend on registrations received (earlier the better)
- South Bay congestion
 - Race area is Navigation Channel to be shared with commercial traffic
 - Sharing space with Newport YC one-design racing
- Accident/Injury Protocol – landing locations noted in Jamestown and Newport

Safety Discussion – Commercial Traffic



Note the size of the blind spot that these large commercial vessels have



Commercial Traffic

Summary from JYC 2024 presentation

- Discussion of US Inland Navigation Rules 7-9; in our narrow channel racing area, racing yachts are considered to be the impeding boat – we do not have right of way
- Can use VHF 13 securite calls from commercial vessels (typically done at Castle Hill, Newport Bridge and north end of Jamestown (heading west) or Sandy Point (heading north-east) when incoming to the Bay) to determine how fast the vessel is coming in or going out and prepare appropriately
- “Handle your yacht like a true Corinthian; keep out of their way, make your move early and DON’T FREAK THEM OUT!”
 - Remember how large their blind spot area is

On-line Racing Support @ www.jyc.org (1 of 2)

- Crew Finder

- Folks wishing to sign up as crew fill out the on-line application; your info will be posted on the JYC website for racing Captains to view and contact you



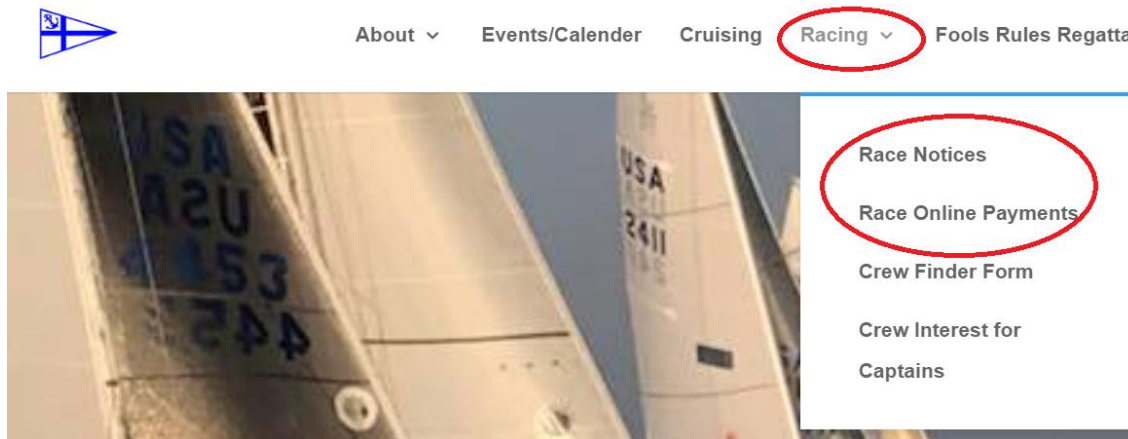
About ▾ Events/Calender Cruising **Racing ▾** Fools Rules Regatta

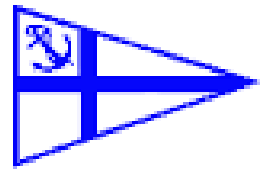


Race Notices
Race Online Payments
Crew Finder Form
Crew Interest for
Captains

On-line Racing Support @ www.jyc.org (2 of 2)

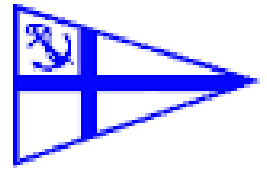
- On-line Registration
 - Entry forms, including waiver can be filled out at www.jyc.org/racing
 - PHRF can be uploaded online as well
 - On-line payment option
 - NOR/SIs are found under Race Notices





And our Social side....

- 2026 JYC/CYC Spring Race Gathering
 - Tues 6/9 après Race @ Conanicut Yacht Club
 - Cash Bar & CYC Grill Menu (will be provided in separate notice)
 - Mooring space available on request to CYC launch captain on VHF72
 - Separate notice to be sent closer to the event
 - RSVP with boat headcount; meal/bar payment to CYC directly
 - RSVP to Kate Shuhy – Kshuhy@cox.net



And our Social side....



- 2026 Installation & Awards Banquet
 - Saturday 11/21 @ Newport Harbor Hotel & Marina
 - Invites to be sent in mid-October
 - Cash Bar & Buffet dinner
 - Awards
 - Dancing to Timeless
 - Guestroom Block will be available for JYC attendees until 9/21
 - Will send link for room registration shortly

A decorative graphic on the left side of the slide, consisting of a light green vertical bar and a white rounded rectangle with a green border. A thick dark blue horizontal bar is positioned above the text.

**Thank you & hope
to see you on the
water soon**